



# Alpe d'Huez

4Ψ France – Isère - L'Alpe d'Huez la Sarenne

*Winter sports and sunbathing on one of the most beautiful balconies of the southern Alps*



## Resort highlights

- Soaking up the sun with a view of the Oisans valley on one of the four terraces, covering over 1300m<sup>2</sup>
- Conquering the 16 km of the iconic La Sarenne slope, starting from 3300 meters above sea level and offering 360° views of the Alps
- Spending quality time in the "Happy room" family lounge playing board games
- Relaxing après-ski: an indoor pool, Club Med Spa by PAYOT, fitness and a whole range of activities in the Resort

# Club Med Ψ



# Ski area:



**SKI AREA:**  
**L'ALPE D'HUEZ GRAND DOMAINE SKI AREA**  
From 1860m to 3330m  
237 km of slopes  
 14 
  29 
  34 
  38

**RESORT:**  
**ALPE D'HUEZ**  
Altitude: 1850 m  
Ski-in / Ski-out Resort  
No minimum age to access the Resort



## Summary



Sports & Activities



Food & Beverages



Accommodation



Make your stay extra special



Practical Information





# Sports & Activities\*\*



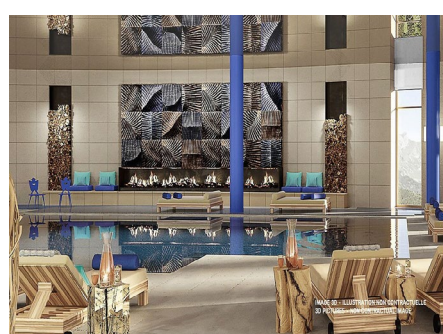
## Land sports & Leisure

	Group lessons	Free access	Min age (years)	Dates available
Skiing School			4 years old	Always
Snowboard School			12 years old	Always
Fitness School	All levels		16 years old	Always
Cross Country Skiing*				Always
Weights and cardio room		✓	18 years old	Always
Cross-training				Always
Walking & Hiking School	Initiation		12 years old	Always

One-to-one lessons\* available on site for Alpine skiing and Snowboarding  
Ski or Snowboard equipment\* is available at Club Med® Ski Service

## Water sports / Leisure & Relaxation

	Group lessons	Free access	Min age (years)	Dates available
Entertainment				Always
Swimming Pool activities				Always



### Swimming pool

Swimming pool  
Size: 13.1 m x 7.5 m  
Heated



\*at extra cost  
\*\*depending on weather conditions



# Food & Beverages



## Restaurants

### Les Alpagnes GourmetLounge

#### Gourmet Lounge

Our Gourmet Lounge, will offer you an exclusive gourmet experience in an intimate atmosphere with a panoramic view over the valley. With its subtle blend of authenticity and contemporary spirit, the warm decor provides the ideal backdrop for great local produce. The space adapts to provide the perfect eating experience for every time of day, from gourmet picnic at lunchtime to tasty, comforting afternoon tea, or a discovery dinner. The restaurant's wine cellar\* has a host of surprises in store; the wine waiter will help you choose the perfect wine to accompany your meal. \*A la carte.

### Le Pic Blanc

#### Main Restaurant

Panoramic views of the slopes and the valley from this restaurant with terrace that welcomes you with your family for all your meals. Boost energy and energy with varied buffets.

## Bars

### Le Névé

#### Main bar

The main bar is the perfect place to recharge your batteries during a dynamic day on the slopes. Catch up with family and friends over midday snacks and drinks on the terrace, with stunning views over the valley.

Some Resorts offer the possibility of having lunch at another Resort in the same ski area

Date of publication: 26/05/2019. The information contained in this document is valid on this date, and is subject to change. For full, up-to-date information, contact your travel agent or the Club Med website. The images are non contractual, and serve only as an indication.





# Accommodation



Category	Name	Minimum area (sq m)	Strengths	Capacity	Bathroom	Amenities
Superior	Superior Room - Balcony	23	Balcony	2 - 1	Bathtub , Twin vanity sinks , Separate toilets	, Luggage service , Laundry service (extra charge)
	Junior Family Superior Room - Balcony	28	Balcony	3 - 1	Bathtub , Twin vanity sinks , Separate toilets	
	Family Superior Room - Balcony	28	Balcony	4 - 1	Bathtub , Twin vanity sinks , Separate toilets	
	Superior Room	23		2 - 1	Bathtub , Twin vanity sinks , Separate toilets	
	Junior Family Superior Room	28	Separate kids' room	3 - 1	Bathtub , Twin vanity sinks , Separate toilets	
	Family Superior Room	28		4 - 1	Bathtub , Twin vanity sinks , Separate toilets	
	Superior Room - Mobility Accessible	26		4 - 1	Shower , Twin vanity sinks , Separate toilets	
	Superior Room - Mobility Accessible, Balcony	39	Balcony	3 - 1	Shower , Twin vanity sinks , Separate toilets	
Deluxe	Deluxe Room	29	Lounge area Balcony	2 - 1	Bathtub , Twin vanity sinks , Separate toilets	Minibar (non provisioned) , Luggage service , Laundry service (extra charge) , Pool towel , Bathrobe , Slippers , Amenities: accessories ( shower cap, vanity kit,manicure kit etc...)
Suite	Family Suite	52	Lounge Separate kids' room Balcony	4 - 1	Bathtub , Shower , Twin vanity sinks , Separate toilets	Minibar (non- alcoholic drinks) - refilled daily , Espresso machine , Luggage service in room , Laundry service (extra charge) , Turn down service , Premium Wi-Fi , Pool towel , Inclusive of room service for continental breakfast , Concierge service , Private transfer for G.M® with transfer package , Bathrobe , Slippers , Amenities: accessories ( shower cap, vanity kit,manicure kit etc...)

Standard equipment for all the lodgings: Wi-Fi Access, Heating, Telephone, TV Screen, Socket type E : 220 - 240 V, USB socket, Kettle, Kettle - Coffee/tea making facilities, Iron and ironing board in the room, Safe deposit box, Club Med Baby Welcome , Baby bed (Must be pre-booked) , Hair Dryer, Heated towel rail, Magnifying mirror, Branded amenities (shampoo, shower gel, body lotion)





# Make your stay extra special



## *Club Med Spa by PAYOT packages*

The perfect combination of beauty and pleasure. Rebalance body and mind thanks to treatments based on the combination of movement and beauty products.





# Practical Information



IMAGE 3D - ILLUSTRATION  
3D PICTURES - NON CONTRACTUAL

## Facilitate your arrival with Easy Arrival

Ski/Snowboard lessons, online subscription - Ski/Snowboard equipment prepared in advance - Children's clubs, online subscription

**ALPE D'HUEZ**  
**CLUB MED ALPE D'HUEZ 38750 L ALPE D HUEZ**



Green Globe International label rewarding our Resorts for their commitment to sustainable development

## Information

### CHECK-IN/CHECK-OUT

Classic Week (from Sunday to Sunday) or "à la carte" stays (7 days or less, beginning any other day than Sunday): Arrival and rooms available between 3 and 8 pm. Should you arrive early, you may lunch at the Resort (at extra cost), subject to availability. On the last day, rooms to be vacated by 10 am, departure by 3 pm. Short stays 2 or 3 nights - weekend by Club Med: Arrival between 12 am and 8 pm. Rooms available between 3 and 6 pm. Should you arrive early, you may lunch at the Resort without add. On the last day, rooms to be vacated by 10 am, departure by 3 pm. Should times change, you will be informed via your "Holiday Rendez-Vous".

**CAR PARKS:** Indoor park Outdoor park

**CURRENCY ACCEPTED:** EURO

**PAYMENT METHODS:** American Express- Mastercard- Visa- Cash (local currency)-

**GMT:**+1 hour (winter), +2 hours (summer)

